

EscarGO

User Guide



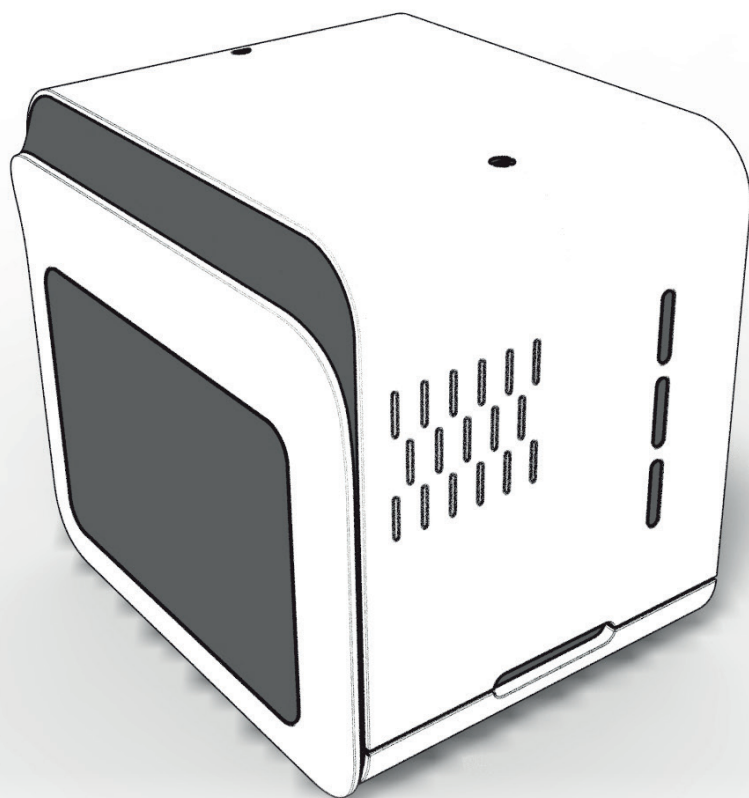


Table of content

Chapter 1: Overview

| | |
|-------------|---|
| Box | 4 |
| Light | 4 |
| Temperature | 4 |
| Humidity | 4 |

Chapter 2: Getting Started

| | |
|--------------------|---|
| Unboxing | 5 |
| Before use | 5 |
| Cleaning | 6 |
| Adding water | 6 |
| Technical problems | 7 |

Chapter 4: Raising snails

| | |
|-------------|---|
| Environment | 8 |
| Feeding | 8 |
| Light | 8 |
| Space | 8 |

Chapter 13: Troubleshooting

| | |
|-------------------------------------|---|
| If Lights don't work | 9 |
| If humidity control doesn't work | 9 |
| If temperature control doesn't work | 9 |

Chapter 14: Safety and Handling

| | |
|---------------------------------|----|
| Important safety information: | |
| Handling | 10 |
| Repairing | 10 |
| High-consequence activities | 10 |
| Choking hazard | 10 |
| Important handling information: | |
| Operating temperature | 10 |
| Transportation | 10 |
| Cleaning | 10 |
| Disposing of EscarGO | 10 |

Chapter 15: Service, Support and Regulatory Compliance Information

| | |
|-----------------------------------|----|
| Service | 11 |
| Support | 11 |
| Regulatory Compliance Information | 11 |

Overview

Box

- Measurements: 400 x 300 x 375 mm
- The housing: black and white PP and transparent PMMA
- Removable plates on top: access to the living area, the water tank and the technology part
- The curtain technique: living surface expansion

Light

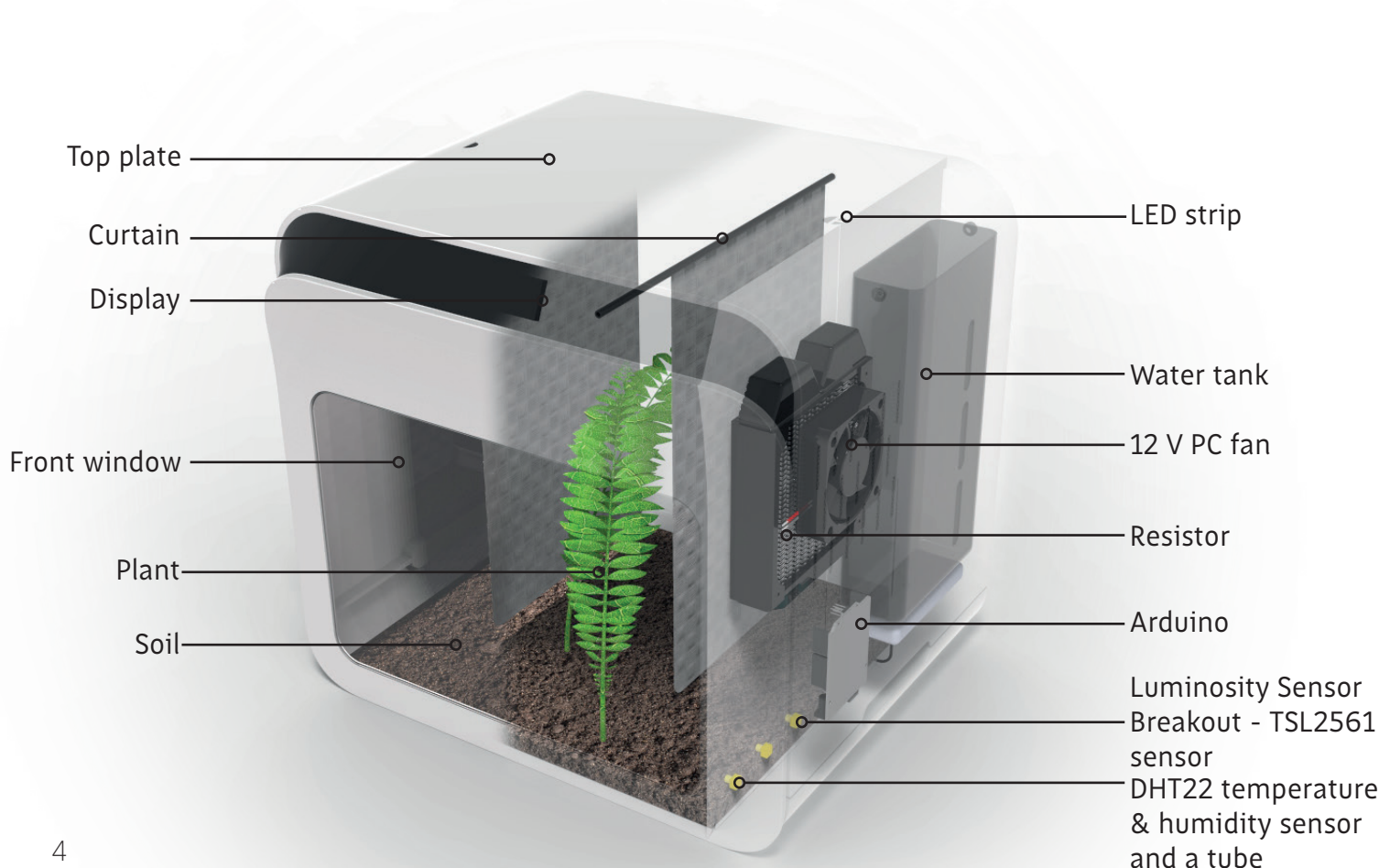
- Light: 16 hours of light/day for optimal growth
- Light system: Luminosity Sensor Breakout - TSL2561 sensor, LED strip

Temperature

- Temperature range: 15-25 °C
- Optimal temperature: 21 °C
- Temperature system: DHT22 temperature & humidity sensor, a 12 V PC fan and resistors

Humidity

- Relative humidity: 75-90 %
- Closed system: humidity level easily manageable
- Tube under the sand leaks water from the water tank into the soil
- Alginate and poly-acrylate: for water absorption in solution
- Water system: water tank, a pump, DHT22 temperature & humidity sensor and a tube

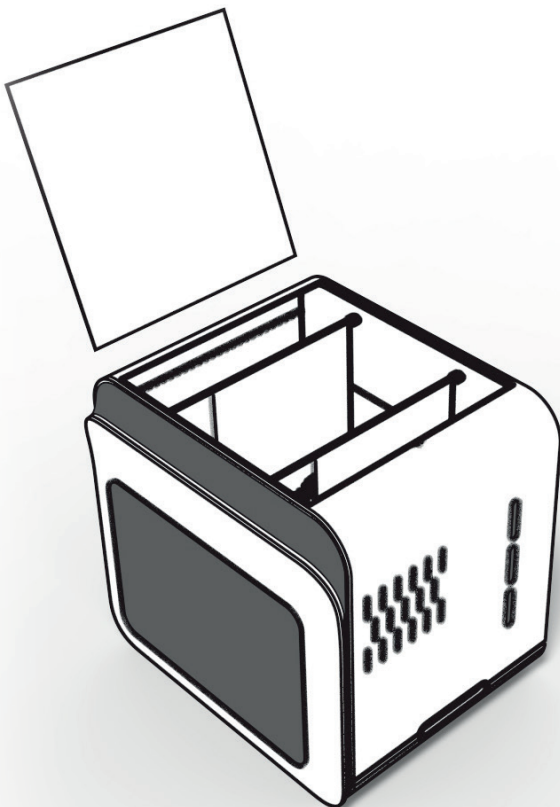


Getting started

Unboxing

Before powering up EscarGO, check the water level. To do this, look towards the right side of the product through the transparent opening. If the level is low, add water until the water tank is full.

To switch on EscarGO, put the plug in the socket. The display will turn on and show the temperature and humidity level. The Arduino will power on all needed systems in order to create a favourable living environment for the escargot.



Before use

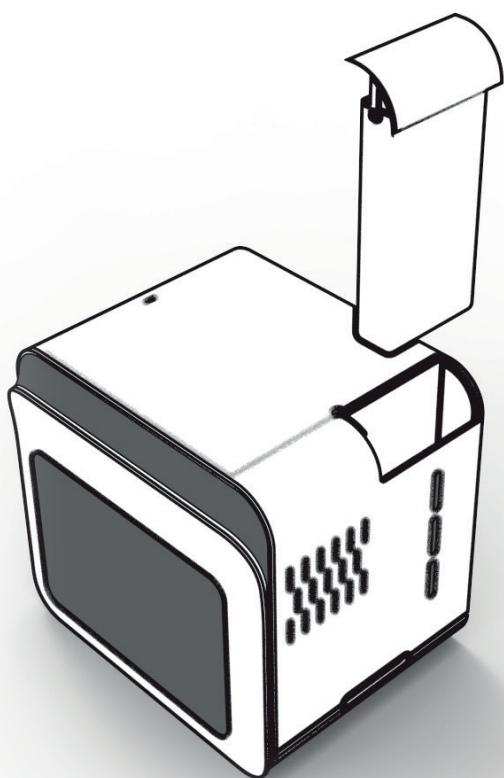
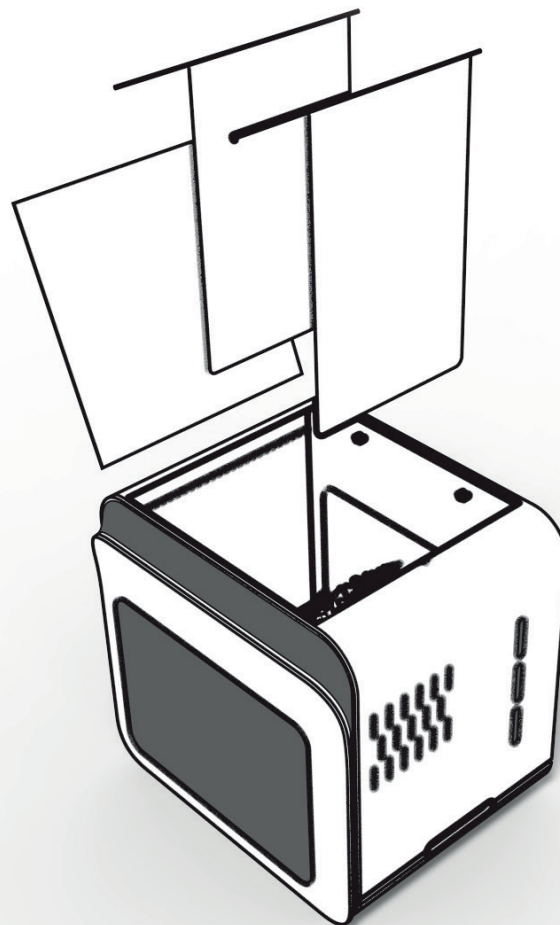
To access the living area of the snails, lift the big top plate. Soil and plants must be added so the snails have a natural environment. The added soil must cover the water tube.

Add a rock to act as a heat regulator.

One hour after the switching on EscarGO, the snails can be placed inside.

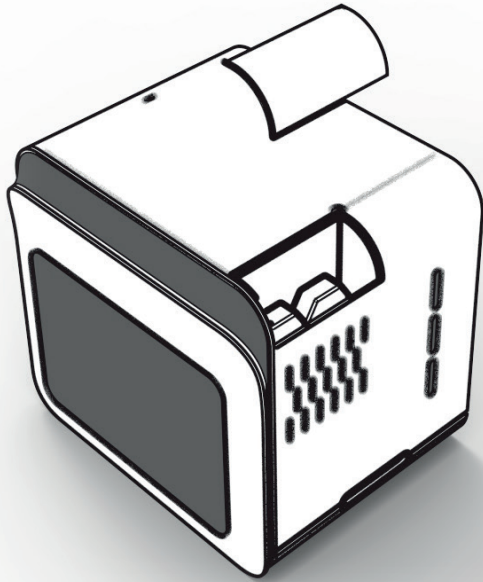
Cleaning

To obtain a hygienic environment, the Escargot Nursery should be cleaned regularly. Before cleaning, all snails should be removed. The soil should be changed every three months. The curtains can be washed easily and this should be done every two to three weeks. Curtains are easy removable by pulling them up.



Adding water

To keep the correct humidity level, enough water should be added. The water level can be checked by looking through the level openings. If the water level gets low, add water by simply pulling up the small rear panel.



Technical problems

By pulling up the small front panel, the technical area can be accessed. If there are any problems please do not try to solve them as this will void your warranty. Go to the nearest distributor and hand the EscarGO in.

Raising snails

For raising the *Cornu Aspersum* the living conditions need to be optimal.

Environment

Activity of the snails necessitates a temperature of between 15 and 25 °C and a humidity between 75 and 90 %. The optimal temperature is 21 °C, if the temperature drops below 7 °C, snails hibernate. If conditions are unfavourable, adult snails are able to remain asleep for a few months. They cannot withstand long periods of frost. So it is important to check sometimes the humidity and the temperature on the LCD screen, just in case.

Feeding

The snails move through all of the terrarium, to get food. Snails tend to keep company when feeding, and are generally social creatures. Sometimes several snails feed together on one piece of food, even if there are other food sources available. The snails will prefer to eat plants rich in calcium and reject plants rich in metals like zinc and nickel. It is possible to feed the snails with leaves from vegetables, like cabbage, turnip leaves or leaves from carrots and radishes. Kitchen waste from vegetables can be fed as well, for example aubergine peel, tomato slices and cucumber peel.

Light

Light is very important to the snails, the light influences their behaviour. To have an optimal reproduction and breeding process, this factor needs to be controlled. The *Cornu aspersum* needs 16 hours of light. There will be a device in the product where the time is set.

Space

The maximum amount of snails that the “EscarGO” can host is 50.

Troubleshooting

If lights don't work

Check if the power supply is connected.

Check if the light sensor is covered.

Note that the lights only work when there is insufficient daylight.

If none of the above helps, please go to the distributor or send back to the factory.

If humidity control doesn't work

Check if the power supply is connected.

Check if the humidity sensor is covered.

Note that water is only added when there is insufficient humidity.

If none of the above helps, please go to the distributor or send back to factory.

If temperature control doesn't work

Check if the power supply is connected.

Check if the temperature sensor is covered.

Note that heat is only added when there is temperature is insufficient.

If none of the above helps, please go to the distributor or send back to factory.



Safety and Handling

Important safety information

Handling

Handle EscarGO with care. It is made of plastic and has sensitive electronic components inside. EscarGO can be damaged if dropped, burned, punctured or crushed. Don't use a damaged EscarGO, as it may cause injury.

Repairing

Don't open EscarGO and don't attempt to repair EscarGO yourself. Disassembling EscarGO may damage it or may cause injury. If EscarGO is damaged, malfunctions or the electronics come in contact with liquid, contact Caracol or a Caracol Authorized Service Provider.

High-consequence activities

This device is not intended for use where the failure of the device could lead to death, personal injury, or severe environmental damage.

Choking hazard

Some EscarGO accessories may present a choking hazard to small children. Keep these accessories away from small children.

Important handling information

Operating temperature

EscarGO is designed to work in ambient temperatures between 0-35°C and stored in temperatures between -10 to 40° C. EscarGO can be damaged if stored or operated outside of these temperature ranges. Avoid exposing EscarGO to dramatic changes in temperature or humidity.

Transportation

Transport EscarGO in such a way nothing can scratch, drop, crush, burn or puncture the product.

Cleaning

Clean EscarGO regularly as stated. This will prolong the life of the product and keep the habitat hygienic.

Disposing of EscarGO

Dispose of the EscarGO by bringing it back to the distributor or return it for free to the factory.

Service, Warranty & Regulatory Compliance Information

Service

Mail: team1eps@gmail.com
Address: Rua Dr. António Bernardino de Almeida 431
4200-072 Porto
Phone number: 22 834 0500
Site: <https://caracoleps.wixsite.com/escargo>

Warranty

Caracol warrants that this product shall be free from defective electrical components and leaks or cracks due to defects in materials or workmanship for 2 years from the date of purchase. If a defect is shown, Caracol will, either repair or replace the product without charge. No cash refunds will be made. This warranty is provided solely to the original consumer purchaser of the product and may not be transferred or assigned.

This warranty does not apply to damage resulting from accident, misuse, abuse, lack of reasonable care, failure to follow safety and installation instructions, use of the product with non-standard electrical service, or any other defect not resulting from defects in the electrical components of the product or defects in materials or workmanship. This warranty will not be effective unless and until the Aquatic Life product is shown to have been used in accordance with the safety and installation instructions accompanying the product.

Regulatory Compliance Information



This product bears the selective sorting symbol for waste electrical and electronic equipment (WEEE). This means that this product must be handled pursuant to European Directive 2002/96/EC in order to be recycled or dismantled to minimize its impact on the environment. Check with your local Environmental Agency for possible disposal instructions or take to an official council registered refuse collection point.